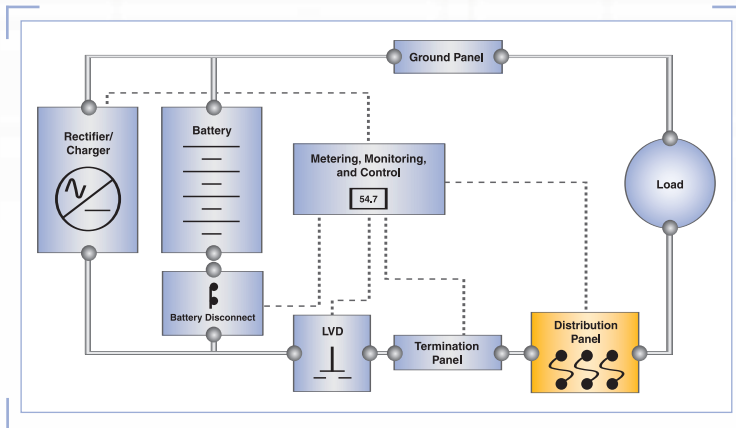


FUSE PANELS AND COMPONENTS



C&D Technologies' Fuse Panels and Components are modular building blocks that allow for systems to be configured to meet specific needs. A selection of fuse types and configurations provides the flexibility to meet specific application needs.

FEATURES AND BENEFITS

Modular Design

Wide selection of fuse panels allows wide variety of system layout.

Quality Materials

Extensive quality control insures components are manufactured to exacting standards resulting in trouble free operation in the field.

Contents

- GMT Fuse Panel
- TPS Fuse Panel
- TPL Fuse Panel

Fuse Panel Selection Guide

	Fuse Type	Max. # of Fuses	Max. Fuse Amperage	Split Bus	Access	Shunt
GMT Fuse Panel	GMT	24	10	Opt	Rear	
TPS Fuse Panel	TPS	13	70		Rear	
TPL Fuse Panel	TPL	2	600		Rear	Opt

GMT FUSE PANELS

The GMT fuse panel provides compact power distribution through current-interrupting fuses. The panel accepts up to 24 GMT fuses with current ratings from 0.18 to 10 amperes. It can be used for one 60-ampere distribution or for two 30-ampere distributions. The panel mounts in one rack space in systems with 19" or 23" equipment racks.

Fuse Panels

Part Number	Rack Width (in)	No. of Fuse Positions	System Voltage	Weight lb (kg)	Height
111-2750-00	19 / 23	24	24 or 48	5.0 (2.3)	1 RU

GMT Fuses

Part Number	Amps	Part Number	Amps
276-0002-00	Dummy	280-0715-00	1.33
280-0720-00	0.18	280-0735-00	2.0
280-0730-00	0.25	280-0760-00	3.0
280-0700-00	0.50	280-0740-00	5.0
280-0705-00	0.75	280-0750-00	7.5
280-0710-00	1.00	280-0770-00	10.0

GMT Fuse Amperage Designation Plus

Part Number	Amps	Color
275-9001-00	0.50	Red
275-9001-01	1.33	White
275-9001-02	2.0	Orange
275-9001-03	3.0	Blue
275-9001-04	5.0	Green

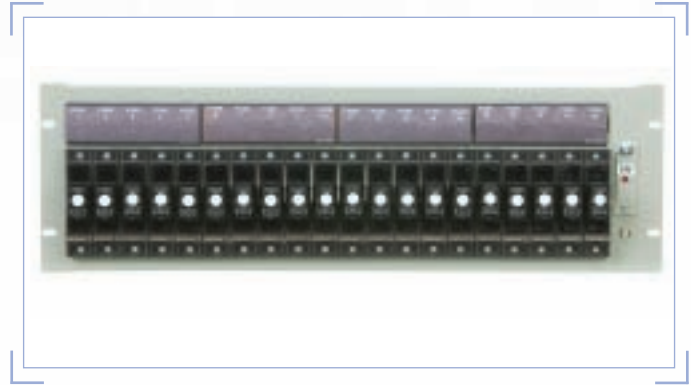


TPS FUSE PANEL

The TPS Fuse Panel provides a compact power distribution solution with high-capacity, current-interrupting fuses. The TPS Fuse Panel accepts up to 20 fuses and has a maximum capacity of 600 amps. Each fuse holder requires one (1) main and one (1) alarm fuse (a 0.5 amp GMT fuse is recommended as the alarms fuse).

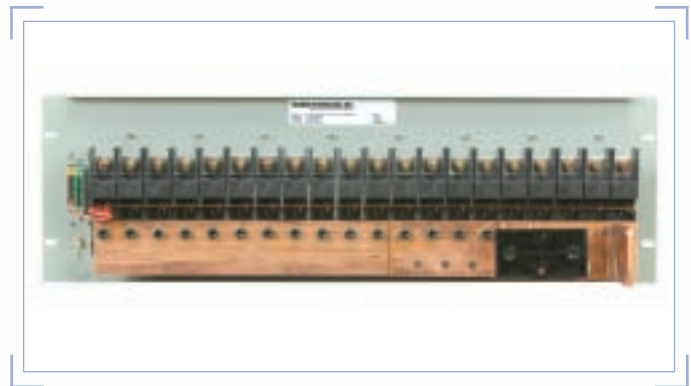
TPS Fuse Panel

Part Number	Rack Width (in)	No. of Fuse Positions	Weight lb (kg)	Height	Shunt
111-3783-00	23	20	20.0 (9.0)	4 RU	No
111-3783-10	23	20	20.0 (9.0)	4 RU	600A



TPS Fuses

Part Number	Amps	Part Number	Amps
280-1413-00	3	280-1428-00	25
280-1414-00	5	280-1431-00	30
280-1416-00	6	280-1433-00	40
280-1419-00	10	280-1436-00	50
280-1422-00	15	280-1439-00	60
280-1425-00	20	280-1442-00	70

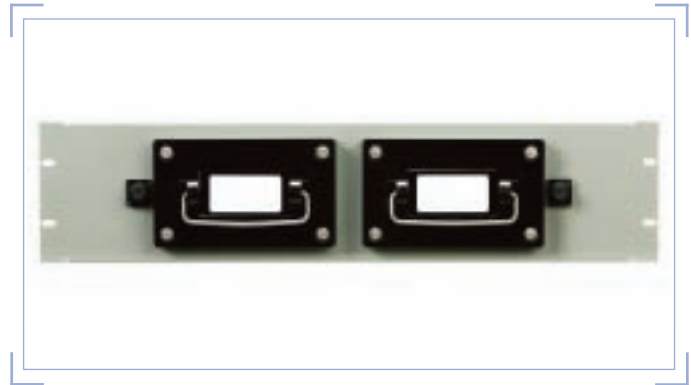


TPL FUSE PANEL

The TPL Fuse Panels feature compact power distribution using high capacity, current interrupting, dead-front fuses. Models are available with one or two fuse positions for 600 to 1,200 ampere distribution. Each fuse block is equipped with a Type 70 indicating alarm fuse. The recommended alarm fuse size is 0.5 amperes.

TPL Fuse Panel

Part Number	Rack Width (in)	No. of Fuse Positions	Weight lb (kg)	Height	Shunt
111B-3068-01	19	1	13.0 (5.9)	3 RU	No
111B-3068-11	19	1	13.0 (5.9)	3 RU	600A
111B-3072-01	23	1	15.0 (6.8)	3 RU	No
111B-3072-11	23	1	15.0 (6.8)	3 RU	600A
111B-3074-01	23	2	27.0 (12.2)	3 RU	No
111B-3074-11	23	2	27.0 (12.2)	3 RU	600A



TPL Fuses

Part Number	Amps	Part Number	Amps
280-1376-00	70	280-1394-00	250
280-1379-00	80	280-1397-00	300
280-1382-00	100	280-1400-00	400
280-1385-00	150	280-1403-00	500
280-1388-00	200	280-1407-00	600
280-1391-00	225		



 **TECHNOLOGIES, INC.****POWER SYSTEMS DIVISION**

1400 Union Meeting Road
P.O. Box 3053 • Blue Bell, PA 19422-0858
(215) 619-2700 • Fax (215) 619-7899 • (800) 543-8630
customersvc@cdtechno.com
www.cdtechno.com

Any data, descriptions or specifications presented herein are subject to revision by C&D Technologies, Inc. without notice. While such information is believed to be accurate as indicated herein, C&D Technologies, Inc. makes no warranty and hereby disclaims all warranties, express or implied, with regard to the accuracy or completeness of such information. Further, because the product(s) featured herein may be used under conditions beyond its control, C&D Technologies, Inc. hereby disclaims all warranties, either express or implied, concerning the fitness or suitability of such product(s) for any particular use or in any specific application or arising from any course of dealing or usage of trade. The user is solely responsible for determining the suitability of the product(s) featured herein for user's intended purpose and in user's specific application.