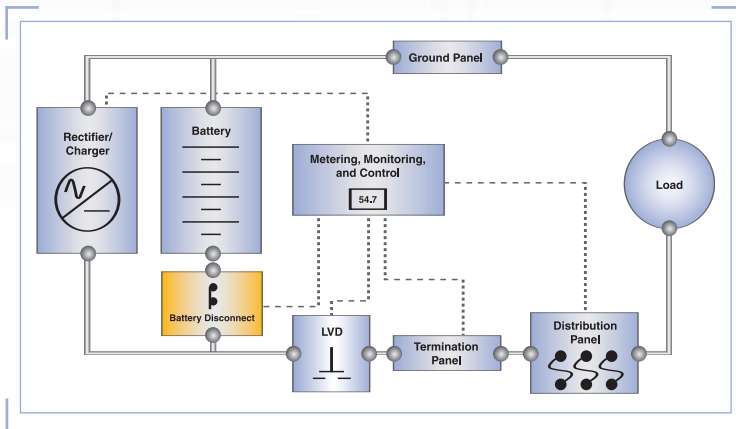


BATTERY DISCONNECTS



C&D Technologies' Battery Disconnect circuit breaker panels provide over-current protection as well as a means of manually disconnecting the battery system. The over-current protection protects the battery from excessive current draw and short circuits while the manual disconnect allows the battery to be isolated for maintenance or emergency situations. An alarm contact is provided for remote indication of circuit breaker open or tripped conditions. Battery disconnects are available in rack mount or wall mount configurations.

FEATURES AND BENEFITS

Modular Design

Wide selection of breaker panels allows wide variety of system layout.

Quality Materials

Extensive quality control insures components are manufactured to exacting standards resulting in trouble free operation in the field.

Contents

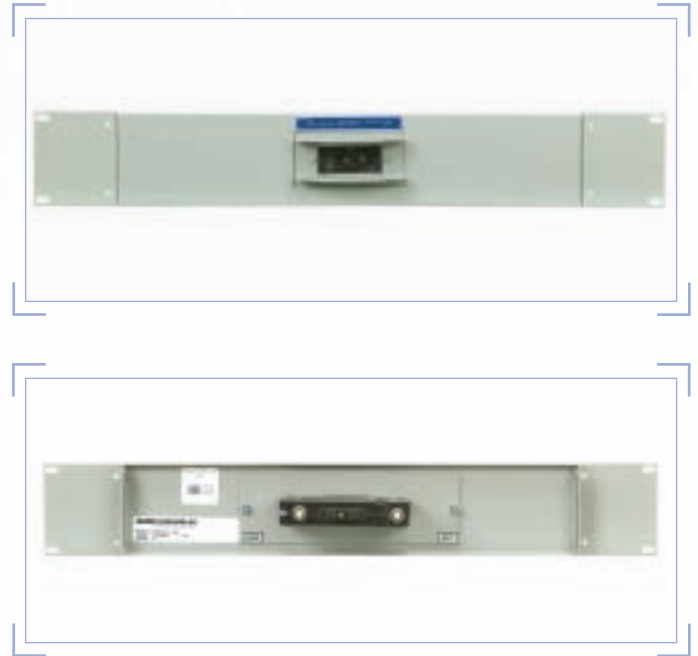
- Rack Mounted Battery Disconnects
- Wall Mounted Battery Disconnects

RACK MOUNTED BATTERY DISCONNECTS

Rack mounted Battery Disconnects include panel, breaker and mounting hardware. The panel can be used with 24V or 48V systems. Larger battery disconnects are equipped with a shunt and an indicating LED.

Rack Mounted Battery Disconnects

Part Number	Capacity (Amps)	Weight lb (kg)	Rack Width (in)	Height	LED	Shunt (Amps)
111-2916-05	50	3.0 (1.4)	19 / 23	2 RU		
111-2916-10	100	3.0 (1.4)	19 / 23	2 RU		
111-2916-15	150	3.0 (1.4)	19 / 23	2 RU		
111-2916-20	200	3.0 (1.4)	19 / 23	2 RU		
111-2916-25	250	3.0 (1.4)	19 / 23	2 RU		
111-3763-11	400	13.0 (5.9)	23	3 RU	•	400
111-3762-11	600	14.0 (6.4)	23	3 RU	•	600



WALL MOUNTED BATTERY DISCONNECTS

Wall Mounted Battery Disconnects include breaker and wall mounted enclosure. The wall mounted disconnect can be used with 24V or 48V systems.

Wall Mounted Battery Disconnects

Part Number	Capacity (Amps)	Height in (cm)	Width in (cm)	Depth in (cm)
111-3882-00	250	28.0 (71.1)	16.0 (40.6)	5.6 (14.2)
111-3882-01	500	28.0 (71.1)	16.0 (40.6)	5.6 (14.2)
111-3882-02	600	28.0 (71.1)	16.0 (40.6)	5.6 (14.2)
111-3883-00	750	28.0 (71.1)	16.0 (40.6)	5.6 (14.2)
111-3884-00	1200	28.0 (71.1)	16.0 (40.6)	5.6 (14.2)



POWER SYSTEMS DIVISION

1400 Union Meeting Road
 P.O. Box 3053 • Blue Bell, PA 19422-0858
 (215) 619-2700 • Fax (215) 619-7899 • (800) 543-8630
 customersvc@cdtechno.com
 www.cdtechno.com

Any data, descriptions or specifications presented herein are subject to revision by C&D Technologies, Inc. without notice. While such information is believed to be accurate as indicated herein, C&D Technologies, Inc. makes no warranty and hereby disclaims all warranties, express or implied, with regard to the accuracy or completeness of such information. Further, because the product(s) featured herein may be used under conditions beyond its control, C&D Technologies, Inc. hereby disclaims all warranties, either express or implied, concerning the fitness or suitability of such product(s) for any particular use or in any specific application or arising from any course of dealing or usage of trade. The user is solely responsible for determining the suitability of the product(s) featured herein for user's intended purpose and in user's specific application.