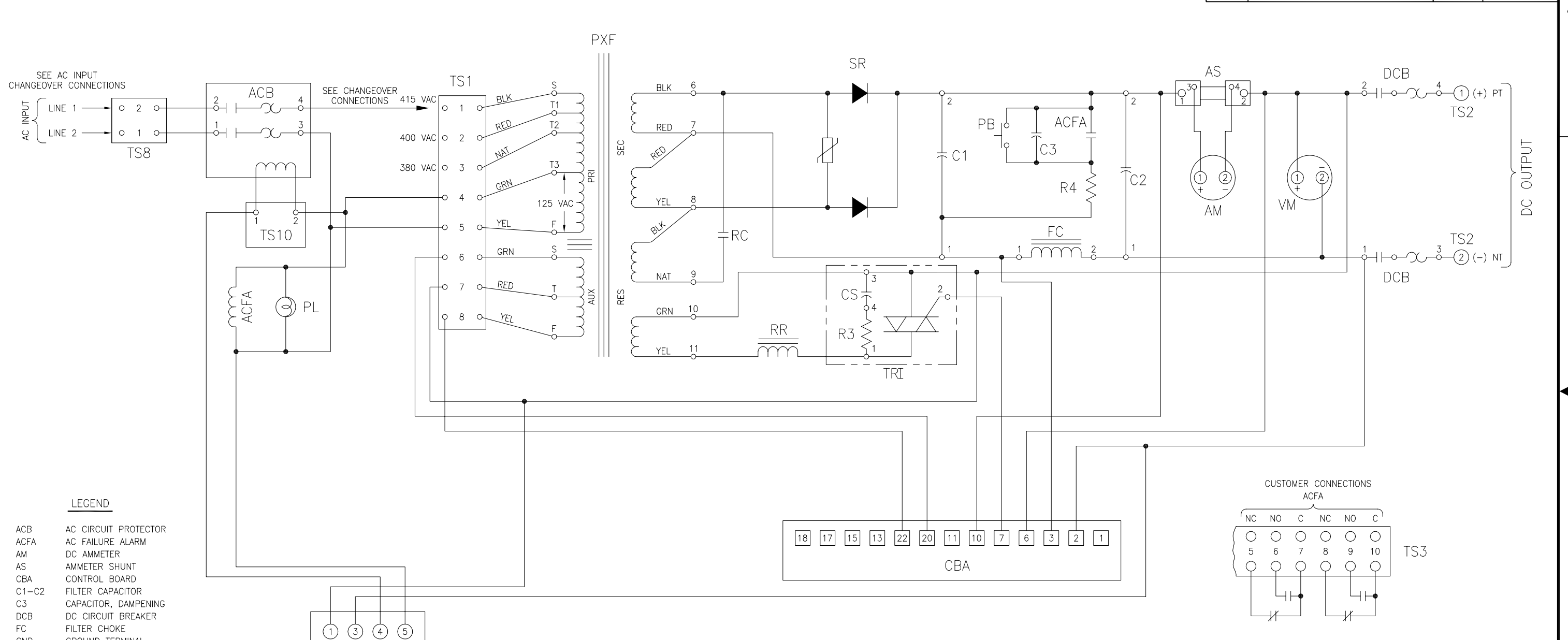


NOTICE: THIS PRINT AND THE INFORMATION SHOWN THEREON IS THE PROPERTY OF C&D TECHNOLOGIES, INC. AND IS BEING FURNISHED AS A CONFIDENTIAL DISCLOSURE. IT MAY NOT BE DELIVERED TO OTHERS NOR REPRODUCED FOR GENERAL CIRCULATION WITHOUT THE WRITTEN APPROVAL OF C&D TECHNOLOGIES, INC.

REVISIONS

REVISION LEVEL	DESCRIPTION	REV. BY REV. DATE	APPROVED BY APPROVED DATE
0	SEE ECN 12576 ORIGINAL RELEASE	KEL 10/08/99	MCM 10/08/99



LEGEND

- ACB AC CIRCUIT PROTECTOR
- ACFA AC FAILURE ALARM
- AM DC AMMETER
- AS AMMETER SHUNT
- CBA CONTROL BOARD
- C1-C2 FILTER CAPACITOR
- C3 CAPACITOR, DAMPENING
- DCB DC CIRCUIT BREAKER
- FC FILTER CHOKE
- GND GROUND TERMINAL
- HVSD HIGH VOLTAGE SHUTDOWN
- PB CAPACITOR DISCHARGE PUSH BUTTON
- PL AC PILOT LIGHT
- PXF POWER TRANSFORMER
- RC RESONANT CAPACITOR
- RR RESONANT REACTOR
- R4 RESISTOR, STABILIZER
- SP SURGE PROTECTOR
- SR RECTIFIER
- TRI TRIAC ASSEMBLY
- TS1 TERMINAL STRIP, PXF PRI
- TS2 TERMINAL STRIP, DC OUTPUT
- TS3 TERMINAL STRIP, CUST. CONN.
- TS8 TERMINAL STRIP, AC INPUT
- TS9 TERMINAL STRIP, BALLAST
- TS10 TERMINAL STRIP ACB
- VM DC VOLTMETER

CHANGEOVER CONNECTIONS	
380 VAC	ACB-4 TO TS1-3
400 VAC	ACB-4 TO TS1-2
415 VAC	ACB-4 TO TS1-1

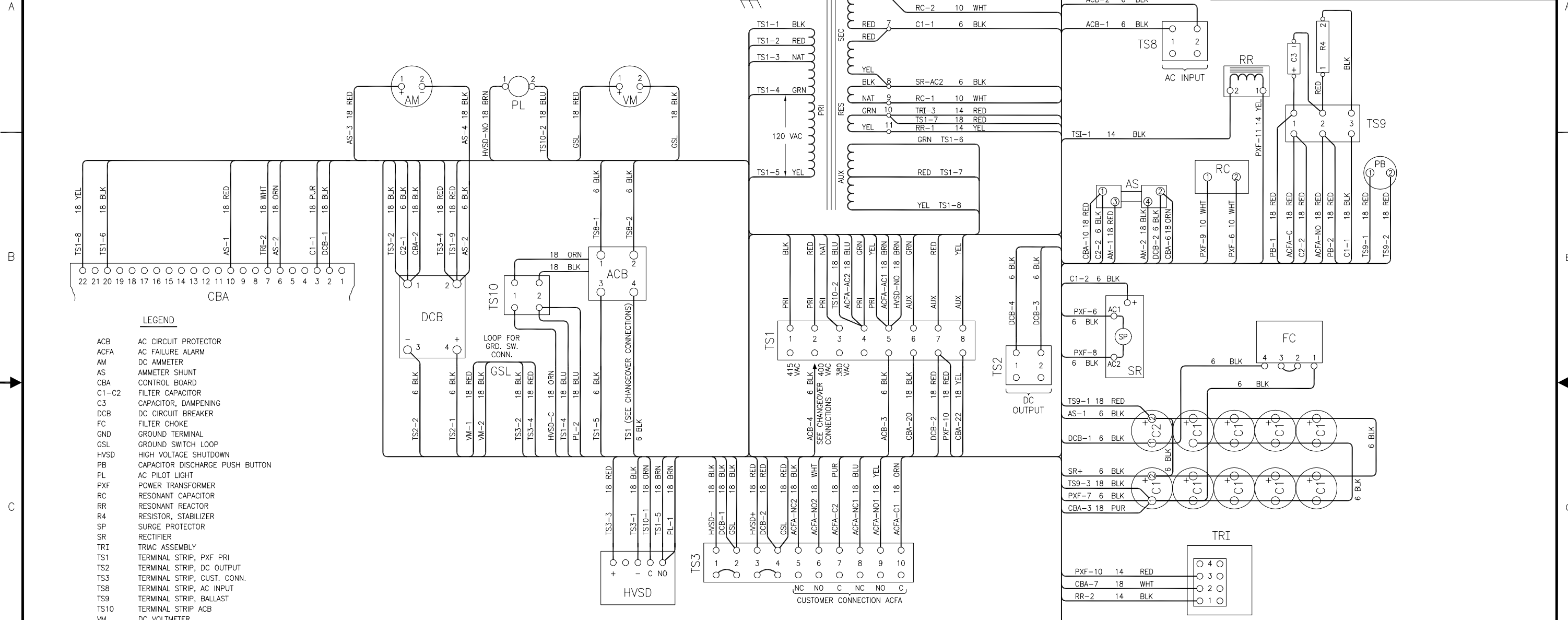
NOTE: SEE INSTRUCTION MANUAL FOR ALL PRINTED CIRCUIT BOARD SCHEMATICS.

DISTRIBUTION CODE:		<b>C&amp;D TECHNOLOGIES, INC.</b> Power Solutions			
APPROVALS		DATE		SCHEMATIC DIAGRAM 380/400/415VAC 50 Hz ARE CHARGER	
DRAWN K. E. LEWIS		10/08/99			
CHECKED D. B. WILSON		10/08/99			
APPROVED M. MENTGEN		10/08/99			
APPROVED		SIZE <b>B</b>	RATING STANDARD	DOC TYPE / NUMBER KBC-5799	REVISION 0
BLANK SIZE:		SCALE: NONE	SHEET: 1 OF 1	FILE NAME: KBC5799_SHT_1_ISS_0	
		UNLESS OTHERWISE SPECIFIED DIMENSIONS ARE IN INCHES ± TOLERANCES ON:		FRACTIONS XX XXX	DECIMALS 0.020 0.010
				ANGLES ±1°	

NOTICE: THIS PRINT AND THE INFORMATION SHOWN THEREON IS THE PROPERTY OF C&D TECHNOLOGIES, INC. AND IS BEING FURNISHED AS A CONFIDENTIAL DISCLOSURE. IT MAY NOT BE DELIVERED TO OTHERS NOR REPRODUCED FOR GENERAL CIRCULATION WITHOUT THE WRITTEN APPROVAL OF C&D TECHNOLOGIES, INC.

REVISIONS

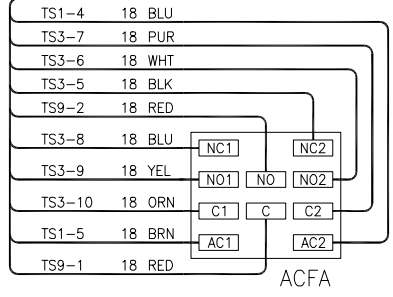
REVISION LEVEL	DESCRIPTION	REV. BY REV. DATE	APPROVED BY APPROVED DATE
0	SEE ECN 12576 ORIGINAL RELEASE	KEL 10/08/99	MCM 10/08/99



LEGEND

- ACB AC CIRCUIT PROTECTOR
- ACFA AC FAILURE ALARM
- AM DC AMMETER
- AS AMMETER SHUNT
- CBA CONTROL BOARD
- C1-C2 FILTER CAPACITOR
- C3 CAPACITOR, DAMPENING
- DCB DC CIRCUIT BREAKER
- FC FILTER CHOKE
- GND GROUND TERMINAL
- GSL GROUND SWITCH LOOP
- HVSD HIGH VOLTAGE SHUTDOWN
- PB CAPACITOR DISCHARGE PUSH BUTTON
- PL AC PILOT LIGHT
- PXF POWER TRANSFORMER
- RC RESONANT CAPACITOR
- RR RESONANT REACTOR
- R4 RESISTOR, STABILIZER
- SP SURGE PROTECTOR
- SR RECTIFIER
- TRI TRIAC ASSEMBLY
- TS1 TERMINAL STRIP, PXF PRI
- TS2 TERMINAL STRIP, DC OUTPUT
- TS3 TERMINAL STRIP, CUST. CONN.
- TS8 TERMINAL STRIP, AC INPUT
- TS9 TERMINAL STRIP, BALLAST
- TS10 TERMINAL STRIP ACB
- VM DC VOLTMETER

CHANGEOVER CONNECTIONS	
380 VAC	ACB-4 TO TS1-3
400 VAC	ACB-4 TO TS1-2
415 VAC	ACB-4 TO TS1-1



DISTRIBUTION CODE:									
APPROVALS				DATE					
DRAWN K. E. LEWIS		10/08/99		<p style="text-align: center;">CONNECTION DIAGRAM 380/400/415VAC 50 Hz ARE CHARGER 36" CABINET</p>		SIZE	RATING	DOC TYPE / NUMBER	REVISION
CHECKED D. B. WILSON		10/08/99				<b>B</b>	STANDARD	KBC-5800	0
APPROVED M. MENTGEN		10/08/99		SCALE: NONE		SHEET: 1 OF 1		FILE NAME: KBC5800_SHT_1_ISS_0	
APPROVED		BLANK SIZE:		UNLESS OTHERWISE SPECIFIED DIMENSIONS ARE IN INCHES ± TOLERANCES ON:		FRACTIONS	DECIMALS	ANGLES	
				±1/32		0.020   0.010		±1'	